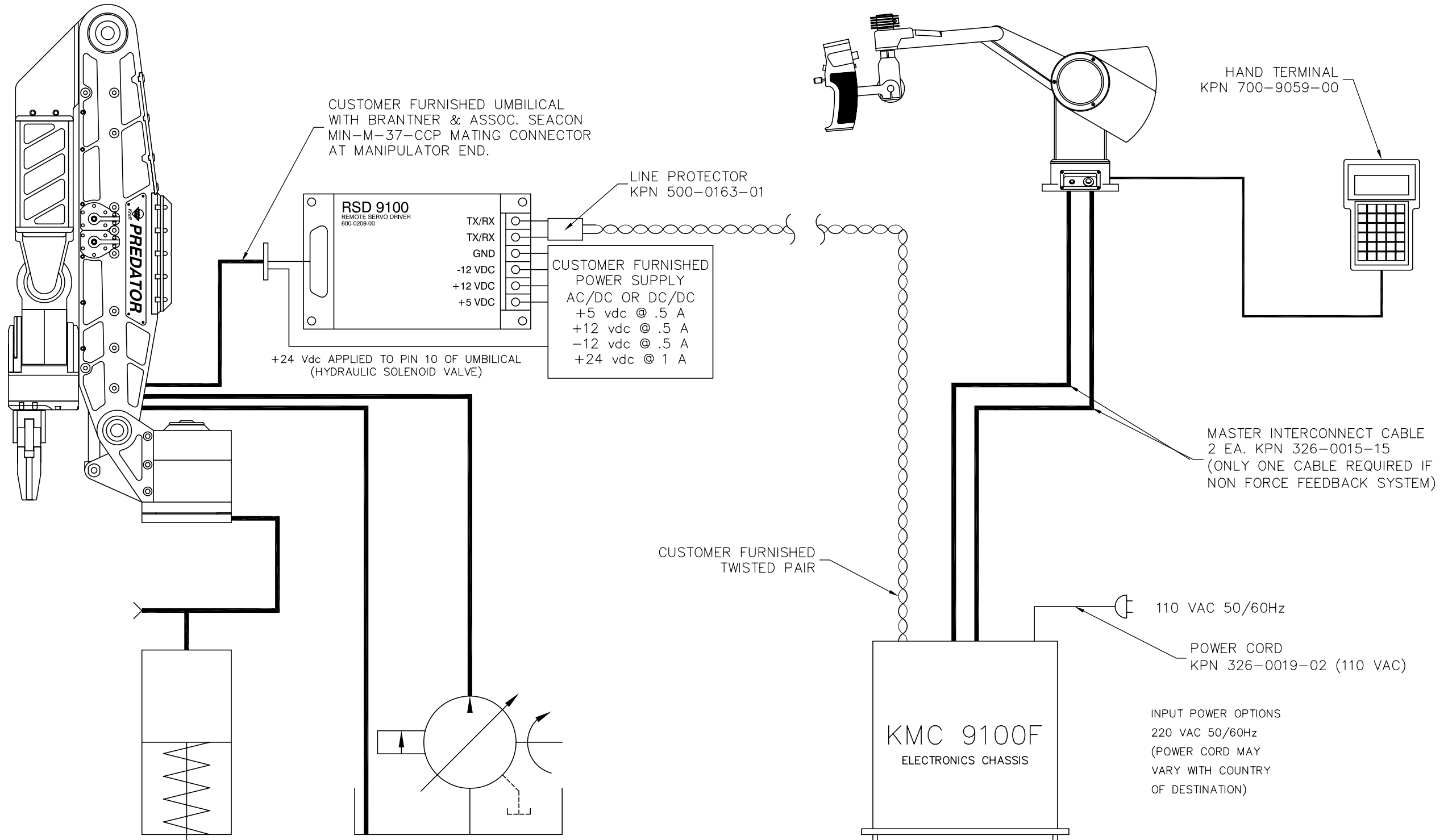


THE PART SHOWN HEREIN IS A PROPRIETARY PRODUCT OF KRAFT TELEROBOTICS, INC. KRAFT RESERVES ALL RIGHTS OF MANUFACTURE OR REPRODUCTION OF SUCH ARTICLE, OR ANY PART THEREOF. THIS DOCUMENT IS FURNISHED FOR ENGINEERING LIAISON PURPOSES ONLY AND MAY NOT BE REPRODUCED WITHOUT WRITTEN AUTHORIZATION FROM KRAFT TELEROBOTICS, INC.



CUSTOMER FURNISHED POSITIVE COMPENSATOR UNIT (REQUIRED FOR UNDERWATER USE ONLY)

CUSTOMER FURNISHED HYDRAULIC POWER UNIT PRESSURE COMPENSATED CAPACITY 5 GPM @ 2000 PSI

INPUT POWER OPTIONS  
220 VAC 50/60Hz  
(POWER CORD MAY VARY WITH COUNTRY OF DESTINATION)

REV	ECO NO.	DATE	BY	DESCRIPTION	UNIT	NEXT ASSY	REQ	PART NO.	DESCRIPTION	ITEM
0		3/28/03	HED							
<p>REVISIONS</p> <p>DATE: 3/28/03</p> <p>BY: HED</p> <p>DESCRIPTION: SYSTEM INTERCONNECT DIAGRAM</p>										
<p>PROPERTY OF KRAFT TELEROBOTICS, INC. OVERLAND PARK, KANSAS 66214</p> <p>TITLE: PREDATOR/STANDARD MASTER SYSTEM INTERCONNECT DIAGRAM</p> <p>DWG. NO.: 610-1023-00</p> <p>SIZE: D</p> <p>MATERIAL: NA</p> <p>TOLERANCES: .xxx ±.01 INCHES</p> <p>ANGLES: ±1/2° .xxx ±.005 INCHES</p> <p>FINISH: NA</p> <p>SCALE: 1 of 1</p>										